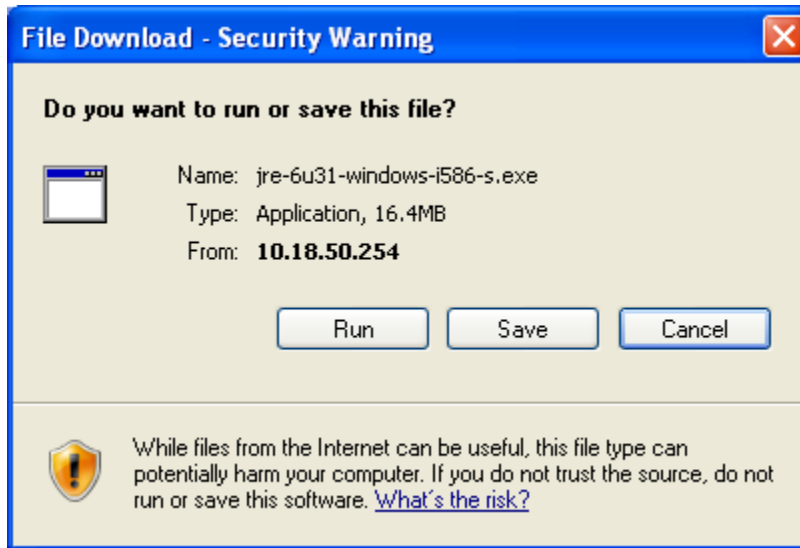


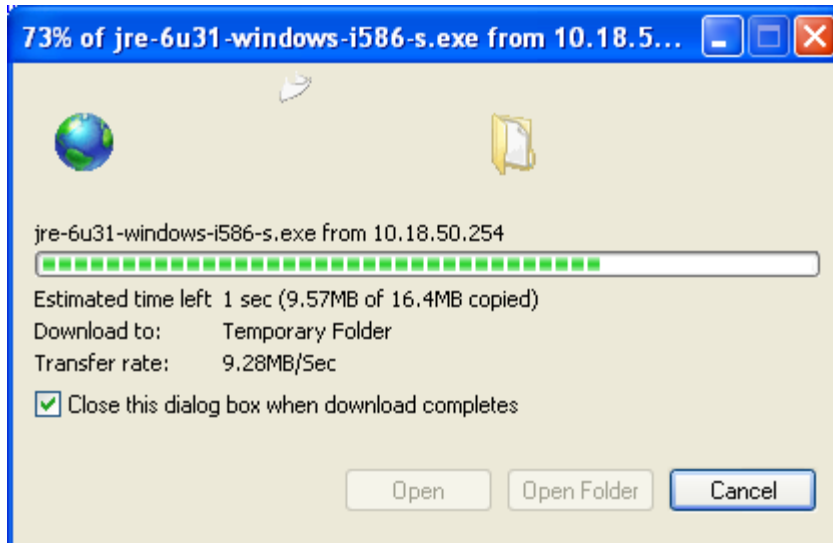
How to Install Java Runtime Environment (JRE) version 31 for AmeSecurities

1. Download and Install recommended Java version 31

- Download the Java at <http://dl.ebrokerconnect.com/download/n2n/jre-6u31-windows-i586-s.exe>
- A pop up message box shall appear.

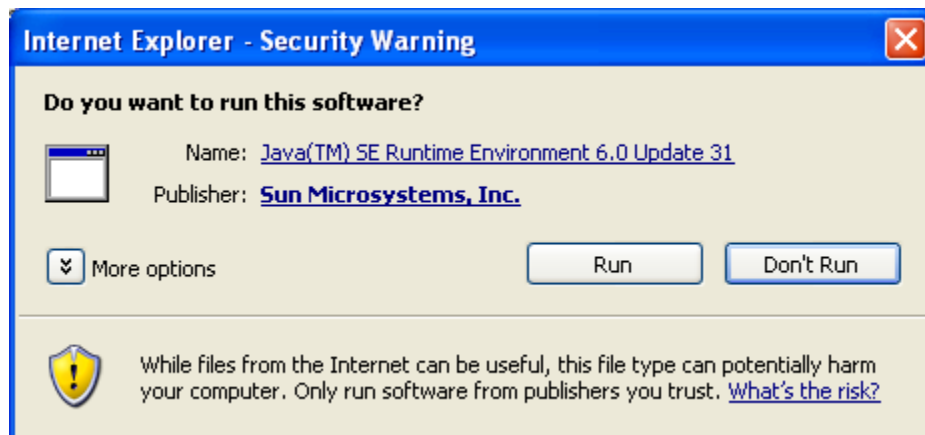


- Click "Run" to download the software.

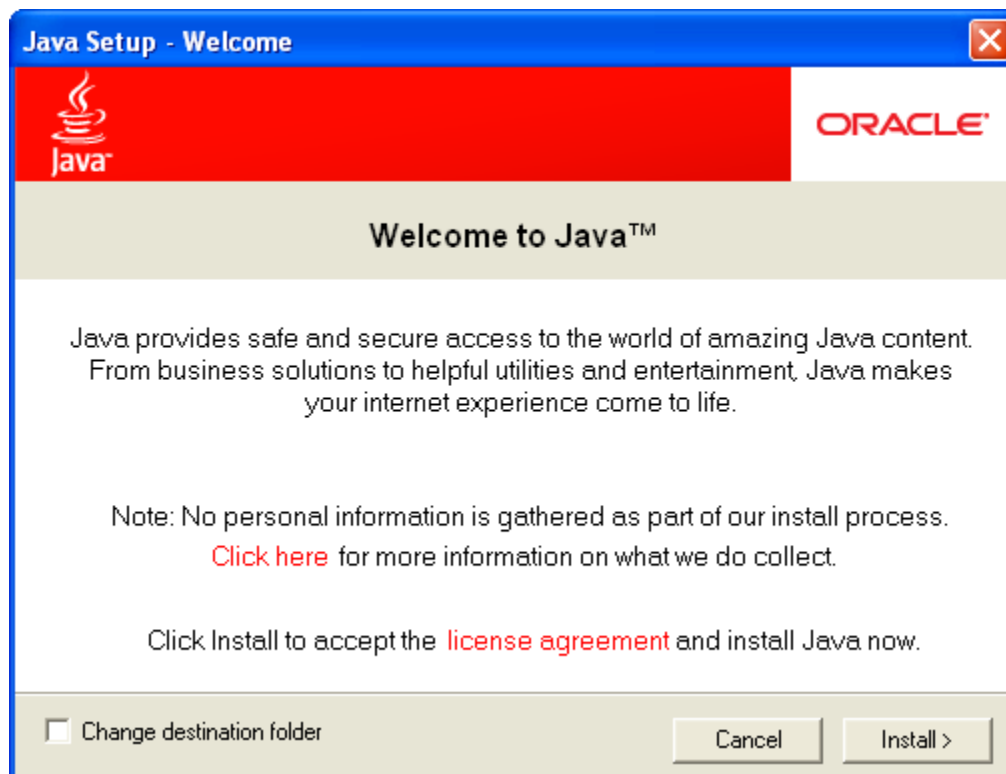


- Download status in progress.

- Click “Run” again after successful download.



- After running through the steps above, system shall prompt to install the Java as below.



- Click “Install” on the pop up window.

- Upon successful login, the trading page shall be displayed as per below.

The screenshot displays the AmSecurities trading platform interface. At the top, there is a navigation bar with various market indices like FBMT100, FBM70, FBMSCAP, FBMEMAS, and FBMFLG. Below this is a header section with the AmSecurities logo, a 'Welcome ebusiness' message, and a 'LOGOUT' button. A secondary navigation bar includes 'Home', 'Trade Now', 'My Profile', 'eServices', 'Research', 'Products & Services', 'About Us', and 'Help'. A third navigation bar contains 'Filter', 'Menu', 'Tools', 'My Watchlists', 'Chart', 'Indices', 'Scoreboard', 'Market', 'Info', 'Analysis', and 'Calc'. Below these are several tabs: 'Reset', 'Go ALL', 'Trade', 'My Portfolio', 'Order Status', 'Report', and 'Setting'. The main area features a market data table with columns for STS, Code, Name, LACP, High, Low, B/Qty, Buy, Sell, S/Qty, LVol, Last, Change, Chg.%, Volume, Close, News, and TOP. Below the table is an order entry form with tabs for 'Order', 'General', 'Exchange', 'Stock News', and 'General News'. The form includes fields for 'Order Ticket', 'Price', 'Quantity', 'Order Type', and 'Validity', along with 'Buy / F1' and 'Sell / F4' buttons. At the bottom, there are 'Total Buy :-' and 'Total Sell :-' fields, and a footer with 'Good Till Date Expiry Note' and 'Indicative Brokerage'.

| STS | Code | Name | LACP | High | Low | B/Qty | Buy | Sell | S/Qty | LVol | Last | Change | Chg.% | Volume | Close | News | TOP |
|-----|--------|-----------|-------|-------|-------|---------|-------|-------|---------|-------|-------|--------|--------|---------|-------|------|-------|
| N | 5161CF | JCY.CF | 0.150 | 0.190 | 0.160 | 11,909 | 0.170 | 0.175 | 10,243 | 50 | 0.175 | 0.025 | 16.67 | 411,352 | 0.150 | ^ | - |
| | 0156 | MPAY | 0.205 | 0.260 | 0.200 | 5,525 | 0.220 | 0.225 | 4,457 | 15 | 0.225 | 0.020 | 9.76 | 408,736 | 0.205 | ^ | - |
| | 0043 | MTRONIC | 0.160 | 0.165 | 0.150 | 41,708 | 0.155 | 0.160 | 7,967 | 500 | 0.160 | 0.000 | 0.00 | 277,356 | 0.160 | ^ | 0.160 |
| | 0034 | INGENS | 0.100 | 0.105 | 0.095 | 255,850 | 0.095 | 0.100 | 21,465 | 85 | 0.100 | 0.000 | 0.00 | 263,928 | 0.100 | ^ | 0.100 |
| | 0020 | AGLOBAL | 0.105 | 0.115 | 0.105 | 104,863 | 0.105 | 0.110 | 58,468 | 1,500 | 0.110 | 0.005 | 4.76 | 209,635 | 0.105 | ^ | 0.105 |
| | 0001 | SCOMNET | 0.170 | 0.180 | 0.165 | 11,273 | 0.165 | 0.170 | 9,672 | 198 | 0.170 | 0.000 | 0.00 | 146,888 | 0.170 | ^ | - |
| | 0076 | CAROTEC | 0.025 | 0.030 | 0.020 | 172,412 | 0.020 | 0.025 | 145,809 | 72 | 0.020 | -0.005 | -20.00 | 144,057 | 0.025 | ^ | 0.025 |
| | 5161CE | JCY.CE | 0.180 | 0.205 | 0.180 | 2,220 | 0.180 | 0.185 | 4,002 | 130 | 0.180 | 0.000 | 0.00 | 95,661 | 0.180 | ^ | - |
| | 0072 | AT | 0.280 | 0.300 | 0.280 | 4,395 | 0.295 | 0.300 | 10,579 | 14 | 0.295 | 0.015 | 5.36 | 89,744 | 0.280 | ^ | - |
| | 9121 | KPSCB | 0.375 | 0.415 | 0.390 | 850 | 0.405 | 0.410 | 2,799 | 100 | 0.410 | 0.035 | 9.33 | 88,837 | 0.375 | ^ | 0.390 |
| | 5156WR | XDL-WR | 0.030 | 0.030 | 0.030 | 88,676 | 0.030 | 0.035 | 85,168 | 200 | 0.030 | 0.000 | 0.00 | 88,554 | 0.030 | ^ | 0.030 |
| | 0095 | KEYWEST | 0.165 | 0.175 | 0.165 | 18,785 | 0.165 | 0.170 | 20,533 | 90 | 0.165 | 0.000 | 0.00 | 87,124 | 0.165 | ^ | - |
| | 7240 | VOIR | 0.645 | 0.670 | 0.565 | 550 | 0.580 | 0.585 | 260 | 40 | 0.585 | -0.060 | -9.30 | 85,066 | 0.645 | ^ | 0.645 |
| | 5161 | JCY | 1.190 | 1.240 | 1.200 | 3,797 | 1.210 | 1.220 | 703 | 100 | 1.210 | 0.020 | 1.68 | 80,878 | 1.190 | ^ | - |
| | 4022WA | WIJAYA-WA | 0.140 | 0.150 | 0.130 | 3,405 | 0.130 | 0.135 | 4,160 | 195 | 0.130 | -0.010 | -7.14 | 67,429 | 0.140 | ^ | 0.140 |
| | 7070 | ASUPREM | 0.210 | 0.215 | 0.205 | 5,780 | 0.210 | 0.215 | 11,653 | 30 | 0.215 | 0.005 | 2.38 | 63,960 | 0.210 | ^ | - |
| | 0116 | FOCUS | 0.170 | 0.175 | 0.170 | 17,520 | 0.170 | 0.175 | 43,300 | 400 | 0.170 | 0.000 | 0.00 | 60,611 | 0.170 | ^ | - |
| | 5097 | KURASIA | 0.570 | 0.605 | 0.580 | 7,671 | 0.595 | 0.600 | 3,627 | 100 | 0.600 | 0.030 | 5.26 | 60,600 | 0.570 | ^ | 0.580 |
| | 5214 | CSL | 1.100 | 1.120 | 1.090 | 2,941 | 1.090 | 1.100 | 2,481 | 100 | 1.090 | -0.010 | -0.91 | 54,587 | 1.100 | ^ | - |
| | 3115 | KBUNAI | 0.170 | 0.170 | 0.165 | 104,504 | 0.165 | 0.170 | 14,001 | 30 | 0.165 | -0.005 | -2.94 | 48,660 | 0.170 | ^ | 0.170 |

2. Disable Auto Java Upgrade

This is required to prevent your PC from automatically download and install the incompatible version of Java.

To turn-off Java auto-upgrade, please refer the below steps:

- Click Start > Control Panel > double click Java icon.
- Go to [Advanced] tab > Open JRE Auto-Download > select “Never Auto-Download” > click “OK”

